

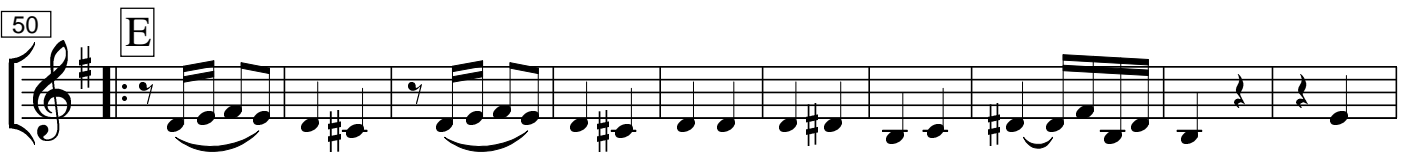
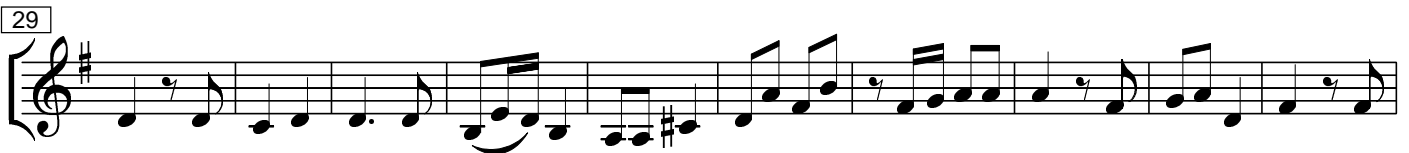
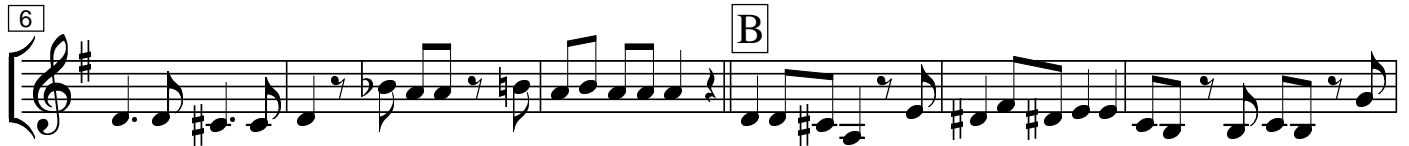
# Sonata in G-Dur

(Klarinetten-Quintett)

C. Ph. E. Bach

(für Flöte und Continuo)

**A** 1. Satz : Andante Tempo 60



# Dritte Klarinette

72 **F**



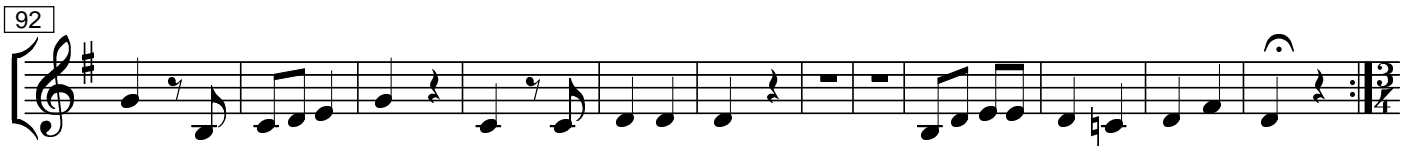
Musical staff 72-80, treble clef, key signature of one sharp (F#). Measure 72 starts with a box containing the letter 'F'. The staff contains a sequence of eighth and sixteenth notes with various rests.

81



Musical staff 81-91, treble clef, key signature of one sharp (F#). The staff contains a sequence of eighth and sixteenth notes with various rests.

92



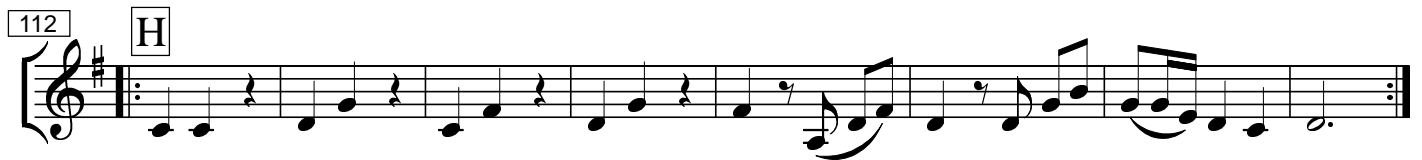
Musical staff 92-103, treble clef, key signature of one sharp (F#). The staff contains a sequence of eighth and sixteenth notes with various rests, ending with a double bar line and repeat dots.

104 **G** 3. Satz : Tempo di Minuetto (Tempo 120)



Musical staff 104-111, treble clef, key signature of one sharp (F#), 3/4 time signature. Measure 104 starts with a box containing the letter 'G'. The staff contains a sequence of eighth and sixteenth notes with various rests.

112 **H**



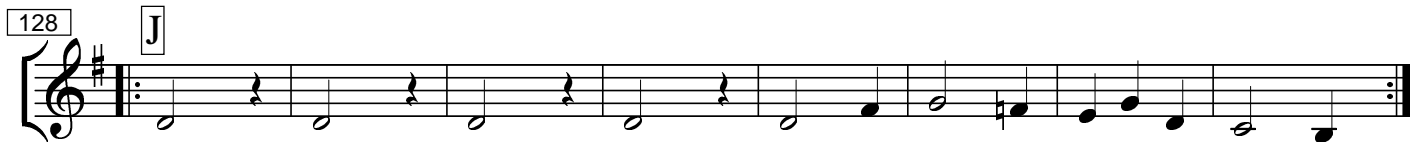
Musical staff 112-119, treble clef, key signature of one sharp (F#). Measure 112 starts with a box containing the letter 'H'. The staff contains a sequence of eighth and sixteenth notes with various rests.

120 **I** 1. Variation <sup>3</sup>



Musical staff 120-127, treble clef, key signature of one sharp (F#). Measure 120 starts with a box containing the letter 'I'. The staff contains a sequence of eighth and sixteenth notes with various rests, including a triplet of eighth notes marked with a '3' above the notes.

128 **J**



Musical staff 128-135, treble clef, key signature of one sharp (F#). Measure 128 starts with a box containing the letter 'J'. The staff contains a sequence of eighth and sixteenth notes with various rests.

136 **K** 2. Variation



Musical staff 136-143, treble clef, key signature of one sharp (F#). Measure 136 starts with a box containing the letter 'K'. The staff contains a sequence of eighth and sixteenth notes with various rests.

144 **L**



Musical staff 144-151, treble clef, key signature of one sharp (F#). Measure 144 starts with a box containing the letter 'L'. The staff contains a sequence of eighth and sixteenth notes with various rests.