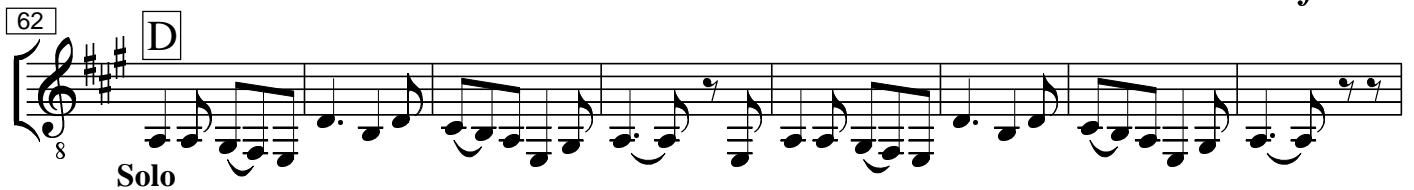


# Drei traditionelle Songs

(Klarinetten-Quintett)

Traditional

**A** Song 1 : Cupid 's Trick (traditional) (Tempo 80)



Bassklarinette

86 **E** Song 3 : Londonderry Air (Tempo 126)

8 *mp* *mp* *mp*

Detailed description: This staff contains measures 86 to 98. It begins with a treble clef, a key signature of one sharp (F#), and a 4/8 time signature. The music features a melodic line with eighth and quarter notes, and a bass line with eighth and quarter notes. Dynamic markings include *mp* (mezzo-piano) at measures 86, 90, and 94. A box labeled 'E' is positioned above the first measure.

99 **F**

8 *mf* Solo

Detailed description: This staff contains measures 99 to 106. It continues the musical piece with a treble clef, one sharp key signature, and 4/8 time signature. The melody is primarily eighth notes. A dynamic marking of *mf* (mezzo-forte) is present at measure 99. The word 'Solo' is written below the staff. A box labeled 'F' is positioned above the first measure.

107

8 *f* *p* rit.

Detailed description: This staff contains measures 107 to 116. The music features a treble clef, one sharp key signature, and 4/8 time signature. Dynamics range from *f* (forte) to *p* (piano). The word 'rit.' (ritardando) is written at the end of the staff. A box labeled 'G' is positioned above the first measure.

117 **G** Bigband-Sound (Tempo 150)

8 *f*

Detailed description: This staff contains measures 117 to 125. It features a treble clef, one sharp key signature, and 4/8 time signature. The music is characterized by a 'Bigband-Sound' with a driving eighth-note melody. A dynamic marking of *f* (forte) is present at measure 117. A box labeled 'G' is positioned above the first measure.

126

8

Detailed description: This staff contains measures 126 to 133. It continues the 'Bigband-Sound' with a treble clef, one sharp key signature, and 4/8 time signature. The melody consists of eighth notes.

134 **H**

8 *mf*

Detailed description: This staff contains measures 134 to 139. It features a treble clef, one sharp key signature, and 4/8 time signature. A dynamic marking of *mf* (mezzo-forte) is present at measure 134. A box labeled 'H' is positioned above the first measure.

140

8 *f* *mf* *f* Tempo 130

Detailed description: This staff contains measures 140 to 145. It features a treble clef, one sharp key signature, and 4/8 time signature. Dynamics include *f* (forte), *mf* (mezzo-forte), and *f* (forte). The tempo is marked as 'Tempo 130'. A box labeled 'I' is positioned above the first measure.

146

8

Detailed description: This staff contains measures 146 to 150. It features a treble clef, one sharp key signature, and 4/8 time signature. The music consists of eighth notes.

151

8 Solo *mf* *ff*

Detailed description: This staff contains measures 151 to 158. It features a treble clef, one sharp key signature, and 4/8 time signature. The word 'Solo' is written at the beginning. Dynamics include *mf* (mezzo-forte) and *ff* (fortissimo). A box labeled 'I' is positioned above the first measure.